

About Us



Headway Gippsland



Easy English



Hard words

This book has some hard words.

The first time we write a hard word

- the word is in **blue**

- we write what the hard word means.

You can get help with this book



You can get someone to help you

- read this book

- know what this book is about



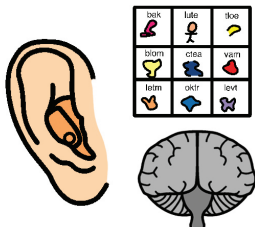
- find more information.

About this book



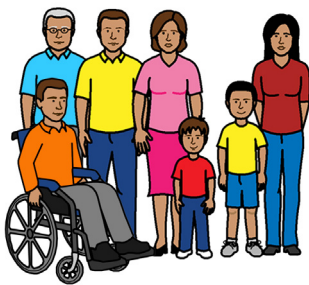
This book is written by Headway Gippsland.

When we say **we** it means
Headway Gippsland.



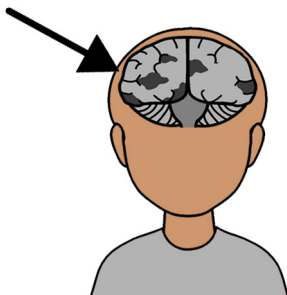
About Headway Gippsland

We help people in Gippsland who have
brain injury or other disabilities.



We also help the families of people with
brain injury or other disabilities

Brain injury is sometimes called **ABI**.
ABI means Acquired Brain Injury.



In this book we say ABI to talk about
brain injury.

We have a vision



Vision means what we want for the future.

Our vision is for all people with disability to be included in the community.

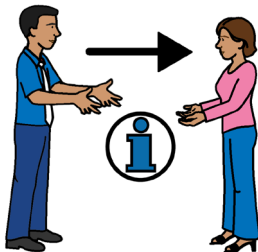
We have a mission

Mission means how we will make the vision happen.



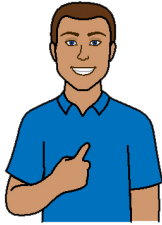
Our mission is

- to give services to people with ABI or other disabilities
- to teach people in the community about ABI or other disabilities
- to help people with ABI or other disabilities live more independently
- to make sure people with ABI or other disabilities are part of their community.



We have values

Values are the things we think are important.

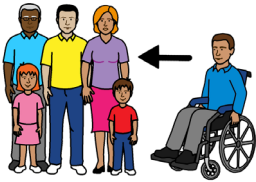


We see the person **not** the disability.



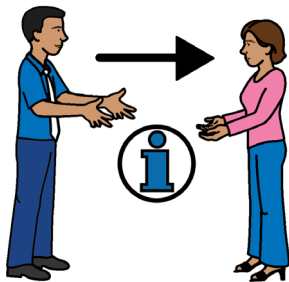
We support carers.

We treat all people with respect.



We make sure everyone is included.

We set goals and help people achieve their goals.



We share information to teach people about ABI and other disabilities.



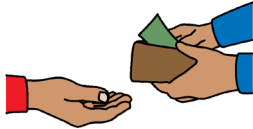
Headway Gippsland and the NDIS



Headway Gippsland is an **NDIS provider**.



NDIS provider means we can give you services if you have an NDIS plan.



You can use your NDIS plan to pay for Headway Gippsland services.

We can give you

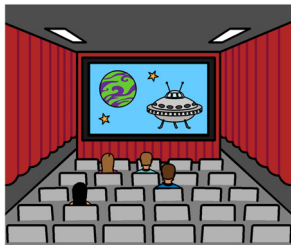


- one on one support
- access to your community

- support to go on camps or holidays



- support to learn new skills
 - for example, life skills



- support to join in group activities
 - for example, social nights.



Headway Gippsland can also

- manage your NDIS plan
- pay your NDIS bills for you



- give you **support coordination**
 - a support coordinator can help make your NDIS plan happen.



More information

For more information contact
Headway Gippsland



Call 03 5127 7166

Toll Free 1800 452 452



Website www.headwaygippsland.org.au



Facebook

Headway Gippsland



National Relay Service

TTY 133 677

Then ask for 03 5127 7166

Speak and Listen 1300 555 727

Then ask for 03 5127 7166

Internet relay users connect to the NRS

Then ask for 03 5127 7166

© Scope (Aust) Ltd. You may use this document for your own personal, non-commercial purposes only. You must not use the document for any other purpose and must not copy, reproduce, digitise, communicate, adapt or modify the document, or any part of it, (or authorise any other person to do so) without the prior consent of Scope (Aust) Ltd.

Scope's Communication and Inclusion Resource Centre

wrote the Easy English in September, 2018. www.scopeaust.org.au

To see the original contact Headway Gippsland.

The Picture Communication Symbols © 1981-2010 by Tobii Dynavox.

All Rights Reserved Worldwide. Used with permission.

ClipArt © Inspired Services, UK. www.inspiredservices.org.uk

Change picture © 2011. www.changepeople.co.uk

